

# SOLIDWORKS

CERTIFIED PARTNER PRODUCTS 2016



## INTEGRATED. ASSOCIATIVE. CERTIFIED.

Get the power you need to finish the job right with SOLIDWORKS® Certified Partner Products. From knowledge-based engineering (KBE) and mold design software solutions to computer-aided manufacturing (CAM) tools—you'll have everything you need to get your products to market faster.

### Integrated

Data export just got easier. A lot easier. With single-window integration, all the tools you need work together using the same design data. Which means you can work directly in the native SOLIDWORKS environment, instead of exporting models to a standalone product. And with our Certified Partner Products, you can take advantage of unique SOLIDWORKS capabilities like Configurations, PropertyManager, and the FeatureManager® design tree.

### Associative

Like SOLIDWORKS software, Certified Partner Products are fully associative. When you make design changes, they update data automatically or warn you that additional changes are necessary. So you can be sure that your data is always in sync. Always.

### Certified

Our certification team rigorously evaluates all of our Certified Partner Products, making sure they comply with SOLIDWORKS standards. You can rest assured that they will look and feel like SOLIDWORKS and work with each new SOLIDWORKS release.

We are always evaluating new solutions for our Certified Partner Products. Visit [www.solidworks.com](http://www.solidworks.com) and the Partner Products area for an up-to-date listing.

## CONTENTS

### CERTIFIED GOLD PARTNERS IN ALPHABETICAL ORDER

3D QuickTools Limited	11	Manusoft Technologies Pte Ltd.	12
Albitech Ltd.	17	Mark Design Solutions Pvt. Ltd.	10
ATR Soft Oy	7	MechWorks srl	14
BlueCielo ECM Solutions	13	MecSoft Corporation	4
BobCAD-CAM, Inc.	3	Modultek Oy	14
Breault Research Organization	13	nPower Software	7
C&G SYSTEMS Inc.	3	OPEN MIND Technologies AG	4
CAD Partner	15	OPTIS	13
CAD/CAM Components	7	QBuild Corporation	8
CadParts, Inc.	5	Quadro Design Pty. Ltd	20
CadWorks Software Oy Ltd.	13	R&B Mold & Die Design	12
Camtek GmbH.	3	ReverseEngineering.com	17
CAPVIDIA.	6	Revware, Inc.	17
CIDEON Software GmbH & Co KG	16	SDH Development	7
CNC Software, Inc.	3	SigmaTEK Systems, LLC	19
Creative Deizgn Concepts, Inc.	17	Sigmetrix, LLC	20
Datakit	6	SolidCAM, Inc.	4
Desktop EDA	6	SolidPartners, Inc.	5
DPS Software GmbH (formerly ToPsWorks)	18	SPI GmbH	19
DriveWorks Ltd	9	Synergis Technologies LLC	14
ElectroMagneticWorks	9	Tacton Systems AB.	10
Forming Technologies, Inc.	18	TransMagic, Inc.	6
Geometric Americas, Inc.	4	Tri D Technologies Inc.	8
HCV Data Management GmbH	15	Varatech Inc.	20
keytech Software GmbH	15	xPLM Solution GmbH	16
Logopress	12		

### CERTIFIED CAM PARTNERS IN ALPHABETICAL ORDER

3D Systems	21	Edgecam – Part of the Vero Software Group	22
CNC Software, Inc.	21	NCG CAM Solutions Ltd	22
DP Technology Corp.	21	Surfcam, Inc. – Part Of The Vero Software Group.	22

## CERTIFIED GOLD PARTNERS BY CATEGORY

### CAM

BobCAD-CAM, Inc.	3
C&G Systems Inc.	3
Camtek GmbH.	3
CNC Software, Inc.	3
Geometric Americas, Inc.	4
MecSoft Corporation	4
OPEN MIND Technologies AG	4
SolidCAM, Inc.	4

### Component/Content

CadParts, Inc.	5
Logopress	5
SolidPartners, Inc.	5

### Data Interoperability

CAPVIDIA.	6
Datakit	6
Desktop EDA	6
TransMagic, Inc.	6

### Design/Drafting

ATR Soft Oy	7
CAD/CAM Components	7
nPower Software	7
SDH Development	7
Tri D Technologies Inc.	8

### ERP

QBuild Corporation	8
--------------------	---

### FEA

ElectroMagneticWorks.	9
-----------------------	---

### KBE/Design Automation

Driveworks Ltd	9
Mark Design Solutions Pvt. Ltd.	10
Tacton Systems AB.	10

### Mold and Die Design

3D QuickTools Limited	11
C&G Systems Inc.	11
CAPVIDIA.	11
Logopress	12
Manusoft Technologies Pte Ltd.	12
R&B Mold & Die Design	12

### Optical Design and Analysis

Breault Research Organization	13
OPTIS	13

### PDM

BlueCielo ECM Solutions	13
CadWorks Software Oy Ltd	13
MechWorks srl	14
Modultek Oy	14
Synergis Technologies LLC	14

### Piping and HVAC

CAD Partner	15
-------------	----

### PLM

HCV Data Management GmbH	15
keytech Software GmbH	15

### PLM Integration

CIDEON Software GmbH & Co KG	16
xPLM Solution GmbH	16

### Reverse Engineering and Inspection

Albitech Ltd.	17
Creative Dezin Concepts, Inc.	17
ReverseEngineering.com	17
Revware, Inc.	17

### Sheet-Metal Fabrication

3D QuickTools Limited	18
DPS Software GmbH (formerly ToPsWorks)	18
Forming Technologies, Inc.	18
Logopress	18
SigmaTEK Systems, LLC	19
SPI GmbH	19

### Steel Design

Quadro Design Pty. Ltd	20
------------------------	----

### Tolerance Analysis

Sigmatrrix, LLC	20
Varatech Inc.	20

## CERTIFIED GOLD PARTNERS – CAM

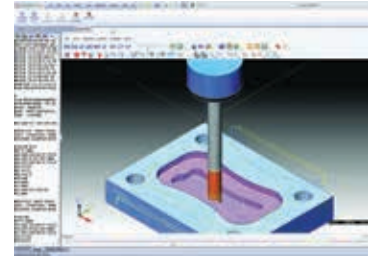


**BobCAD-CAM, Inc.**  
**BobCAD-CAM for SOLIDWORKS**

28200 U.S. Highway 19  
N. Clearwater, FL 33761

727 442 3554

[chris@bobcad.com](mailto:chris@bobcad.com)  
<http://www.bobcad.com>

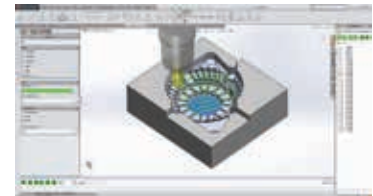


**C&G SYSTEMS INC.**  
**CG CAM-TOOL**

Tennoz Central Tower 19F  
2-2-24 Higashi-Shinagawa, Shinagawa-ku  
Tokyo, TOKYO 140-0002  
Japan

+81 3 6864 0784

<http://www.cgsys.co.jp/en/index.html>  
[info\\_cg\\_camtool@cgsys.co.jp](mailto:info_cg_camtool@cgsys.co.jp)

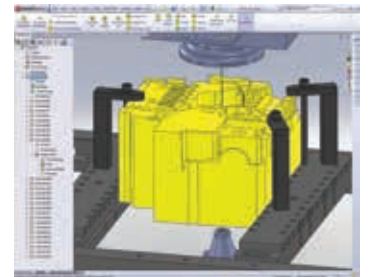


**Camtek GmbH**  
**OPTICAM**

Werkstrasse 24  
Weinstadt, BW 71384  
Germany

+ 497151979202

[Melanie.Staib@Camtek.de](mailto:Melanie.Staib@Camtek.de)  
<http://www.camtek.de>

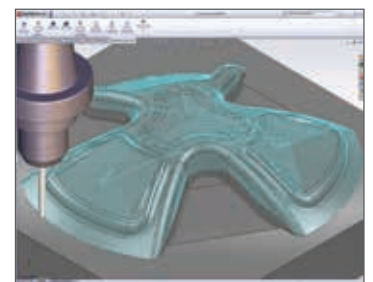


**CNC Software, Inc.**  
**Mastercam® for SOLIDWORKS**

671 Old Post Road  
Tolland, CT 06084

860 875 5006

[mcinfo@mastercam.com](mailto:mcinfo@mastercam.com)  
<http://www.mastercam.com>



## CERTIFIED GOLD PARTNERS – CAM



### Geometric Americas, Inc.

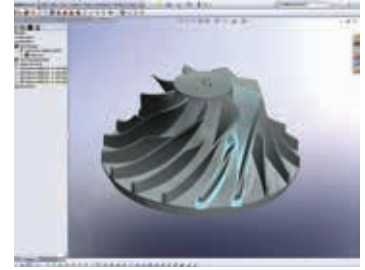
#### CAMWorks

15974 N. 77th Street  
Suite 103  
Scottsdale, AZ 85260

480 367 0132 ext. 5

[inquiries@camworks.com](mailto:inquiries@camworks.com)

<http://www.camworks.com>



### MecSoft Corporation

#### VisualMILL for SOLIDWORKS

18019 Sky Park Circle  
Suite K-L  
Irvine, CA 92614

949 654 8163

[sales@mecsoft.com](mailto:sales@mecsoft.com)

<http://www.visualmillforsolidworks.com>



### OPEN MIND Technologies AG

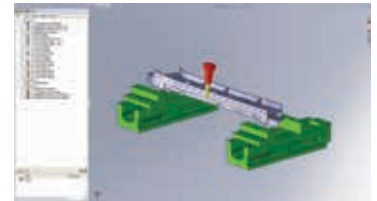
#### hyperMILL for SOLIDWORKS

Argelsrieder Feld 5  
Wessling, Bavaria 82234

+49 8153 933 500

[hagen.ruehlich@openmind-tech.com](mailto:hagen.ruehlich@openmind-tech.com)

<http://www.openmind-tech.com>



### SolidCAM, Inc.

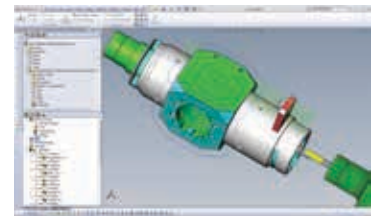
#### SolidCAM, Inc.

33 Kaplan Street  
Or-Yehuda 60305  
Israel

+972 3 5333150

[emil.somekh@solidcam.com](mailto:emil.somekh@solidcam.com)

<http://www.solidcam.com>



## CERTIFIED GOLD PARTNERS – COMPONENT/CONTENT



### **CadParts, Inc.**

#### **CadParts Fastener Library**

1041 East 1420 North  
American Fork, UT 84003

801 376 5307

[sales@cadparts.com](mailto:sales@cadparts.com)

<http://www.cadparts.com>



### **Logopress**

#### **123GO**

ZA Les Salines  
Pouilly Les Vignes, 25115  
France

+333 81 60 23 60

[info@logopress3.com](mailto:info@logopress3.com)

<http://www.logopress3.com>



### **SolidPartners, Inc.**

#### **SolidParts™**

1585 62nd Street  
Suite 99825  
Emeryville, CA 94608

1 800 605 3831

[sales@solidpartners.com](mailto:sales@solidpartners.com)

<http://www.solidpartners.com>



## CERTIFIED GOLD PARTNERS – DATA INTEROPERABILITY



### **CAPVIDIA**

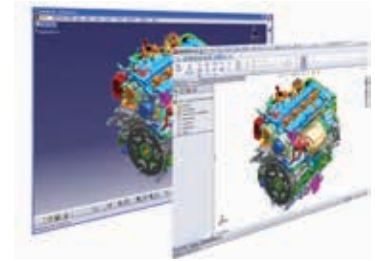
#### **FormatWorks**

Technologielaan 3  
B-3001 Leuven  
Belgium

Europe: +32 16 40 27 47

[tl@capvidia.be](mailto:tl@capvidia.be)

<http://www.capvidia.com>



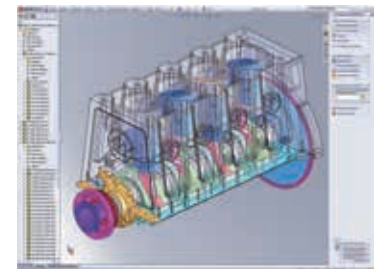
### **Datakit**

#### **CrossCAD/Plg: Catia V5 3D to SOLIDWORKS**

99, rue de Gerland  
Lyon, 69007  
France

+33 478 396 369

<http://www.datakit.com>



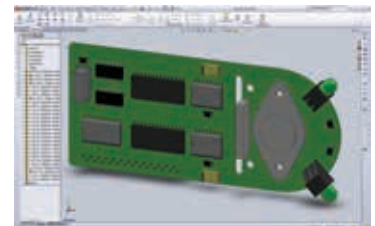
### **Desktop EDA**

#### **SOLIDWORKS IDF Modeler**

80 Keilor Rd  
Suite 11B  
Essendon, VIC 3041  
Australia

[info@desktop-eda.com.au](mailto:info@desktop-eda.com.au)

<http://www.desktop-eda.com.au>



### **TransMagic, Inc.**

#### **TransMagic PowerPack for SOLIDWORKS**

11859 Pecos Street  
Suite 310  
Westminster, CO 80234

303 460 1406

[info@transmagic.com](mailto:info@transmagic.com)

<http://www.transmagic.com>



## CERTIFIED GOLD PARTNERS – DESIGN/DRAFTING



### **ATR Soft Oy**

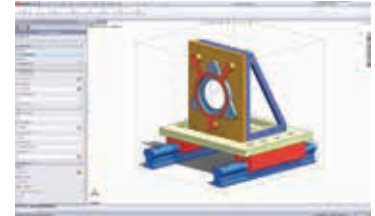
#### **CustomTools**

Joukahaisenkatu 1  
20520 TURKU  
Finland

+358 20 7129 620

[info@customtools.info](mailto:info@customtools.info)

<http://www.customtools.info>



### **CAD/CAM Components**

#### **GeometryWorks3D**

31878 Del Obispo #118-332  
San Juan Capistrano, CA 92675

949 728 1309

[bob\\_jones@cadcamcomponents.com](mailto:bob_jones@cadcamcomponents.com)

<http://www.cadcamcomponents.com>



### **nPower Software**

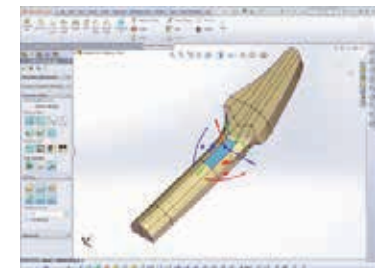
#### **Power Surfacing**

13064 Trail Dust Avenue  
San Diego, CA 92129

858 592 8866

[DGill@nPowerSoftware.com](mailto:DGill@nPowerSoftware.com)

<http://www.npowersoftware.com>



## **ToolWorks**

### **SDH Development**

#### **ToolWorks BOM Manager**

Langebjergvaenget 4  
Roskilde, - DK-4000  
Denmark

+45 70 22 22 80

[info@toolworks.info](mailto:info@toolworks.info)

<https://www.toolworks.info>



## CERTIFIED GOLD PARTNERS – DESIGN/DRAFTING



### Tri D Technologies Inc.

#### ExactFlat Pro

3250 Bloor Street West  
6th Floor  
Toronto, Ontario M8X 2X9  
Canada

877 977 7776

[sales@exactflat.com](mailto:sales@exactflat.com)  
<http://www.exactflat.com>



## CERTIFIED GOLD PARTNERS – ERP



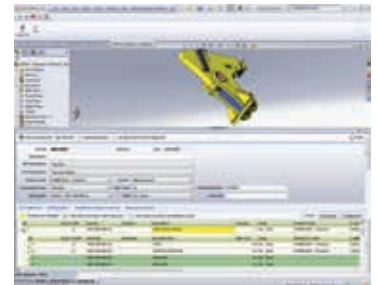
### QBuild Corporation

- CADLink for Enterprise PDM
- CADLink for SOLIDWORKS

210 Telson Rd  
Markham, ON L3R 1E6  
Canada

905 479 7811

[info@qbuildsoftware.com](mailto:info@qbuildsoftware.com)  
<http://www.qbuildsoftware.com>



## CERTIFIED GOLD PARTNERS – FEA



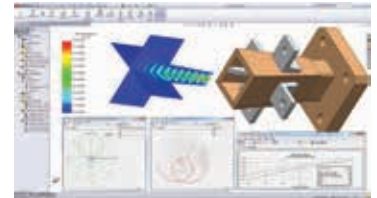
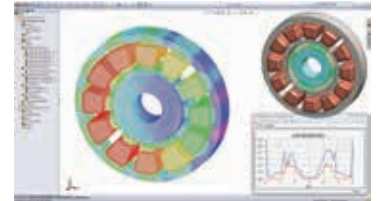
### ElectroMagneticWorks

- EMS
- HFWorks

7709 Cordner Street  
Montreal, QC H8N 2X2  
Canada

USA & Canada: 1 800 397 1557

<http://www.emworks.com>



## CERTIFIED GOLD PARTNERS – KBE/DESIGN AUTOMATION



### DriveWorks Ltd.

- DriveWorks Pro
- DriveWorks Solo
- DriveWorksXpress

The Barley Store  
Laskey Farm, Laskey Lane  
Thelwall, Cheshire WA4 2TF  
United Kingdom

UK: +44 1925 75 75 85

USA: 978 633 3230

[info@driveworks.co.uk](mailto:info@driveworks.co.uk)

<http://www.driveworks.co.uk>



## CERTIFIED GOLD PARTNERS – KBE/DESIGN AUTOMATION



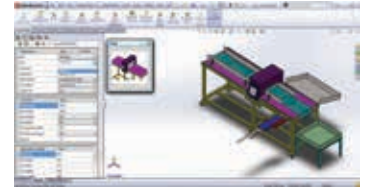
### **Mark Design Solutions Pvt. Ltd.**

#### **CADECplus**

266 Navi Peth, Ksheerada Building  
L B Shastri Road  
Pune, Maharashtra 411030  
India

+91 20 64011848

[info@markengg.com](mailto:info@markengg.com)  
<http://www.cadec.in>



### **Tacton Systems AB**

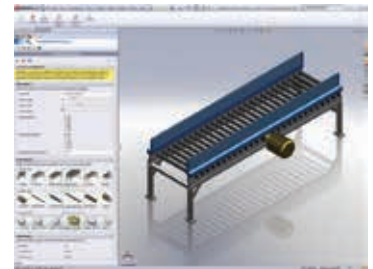
#### **TactonWorks**

Fleminggatan 7  
Stockholm, Stockholm 11226  
Sweden

Sweden: +46 8 690 07 50

USA: 847 868 4730

[info@tacton.com](mailto:info@tacton.com)  
<http://www.tacton.com>



## CERTIFIED GOLD PARTNERS – MOLD AND DIE DESIGN



### 3D QuickTools Limited

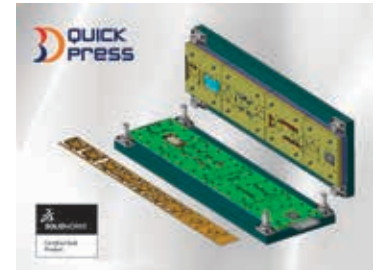
#### 3DQuickPress

Unit 1711, Grand City Plaza  
No. 1-17 Sai Lau Kok Road  
Tsuen Wan, N.T.  
Hong Kong

+852 2788 2832

[info@3dquickpress.com](mailto:info@3dquickpress.com)

<http://www.3dquicktools.com>



### C&G SYSTEMS INC.

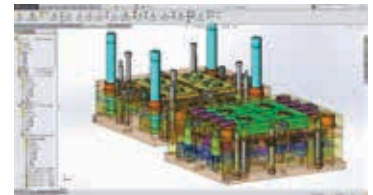
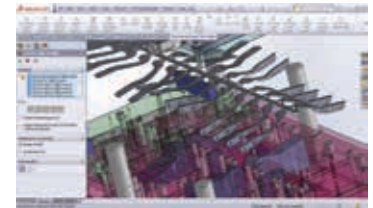
- CG PressDesign
- CG Mold Design

Tennoz Central Tower 19F  
2-2-24 Higashi-Shinagawa, Shinagawa-ku  
Tokyo, TOKYO 140-0002  
Japan

+81 3 6864 0784

Email: [info\\_cg\\_camtool@cgsys.co.jp](mailto:info_cg_camtool@cgsys.co.jp)

Web: <http://www.cgsys.co.jp/en/index.html>



### CAPVIDIA

#### FaceWorks

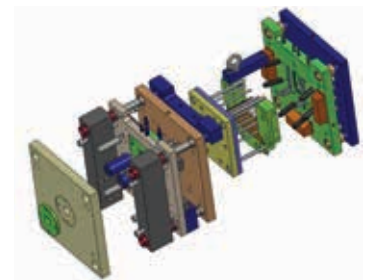
Technologielaan 3  
B-3001 Leuven  
Belgium

Europe: +32 16 40 27 47

USA: 507 794 5447

[info@capvidia.be](mailto:info@capvidia.be)

<http://www.capvidia.com>



## CERTIFIED GOLD PARTNERS – MOLD AND DIE DESIGN



### Logopress

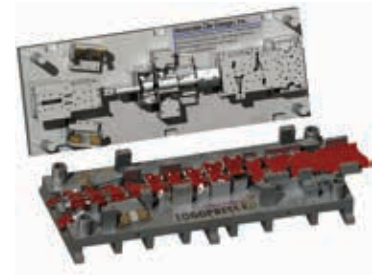
#### Logopress3

ZA Les Salines  
Pouilley Les Vignes, 25115  
France

+333 81 60 23 60

[info@logopress3.com](mailto:info@logopress3.com)

<http://www.logopress3.com>



### Manusoft Technologies Pte Ltd

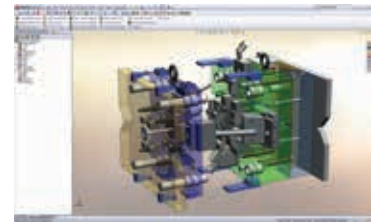
#### IMOLD for SOLIDWORKS

1 Cleantech Loop  
#02-25A Cleantech One  
Singapore, 637141  
Singapore 117628

+65 67751565

[info@imold.com](mailto:info@imold.com)

<http://www.imold.com>



### R&B Mold & Die Design

- ElectrodeWorks
- MoldWorks
- SplitWorks

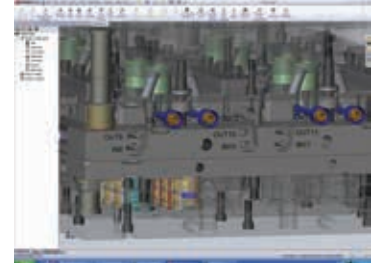
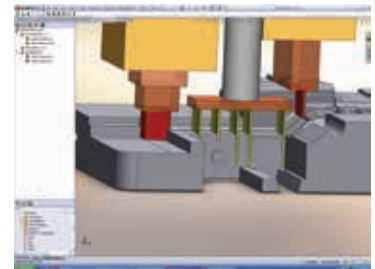
32 Shaham Street  
P.O. Box 7005  
Petah Tikva, 49170  
Israel

Israel: +972 3 9233522

USA: 1 800 844 3589

[marketing@rnb.co.il](mailto:marketing@rnb.co.il)

<http://www.rnbusa.com>



## CERTIFIED GOLD PARTNERS – OPTICAL DESIGN AND ANALYSIS



### Breault Research Organization

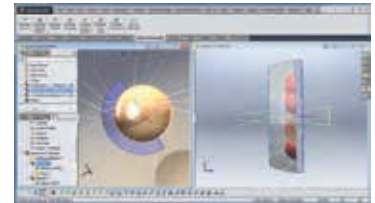
#### APEX

6400 E Grant Road - Suite 350  
Tucson, AZ 85715  
United States

520 721 0500

[info@breault.com](mailto:info@breault.com)

<http://www.breault.com>



### OPTIS

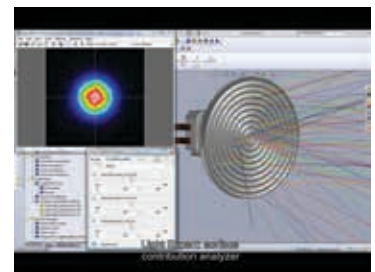
#### SPEOS for SOLIDWORKS

BP 275 - cedex 9  
Toulon, 83078  
France

+33 494 086 690

[optis@optis-world.com](mailto:optis@optis-world.com)

<http://www.optis-world.com>



## CERTIFIED GOLD PARTNERS – PDM



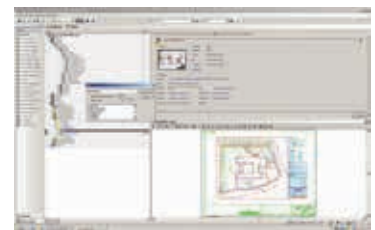
### BlueCielo ECM Solutions

#### BlueCielo Meridian Enterprise

Polarisavenue 1  
Hoofddorp, ZH 2132 JH  
The Netherlands

+31 (0) 70 413 3700

<http://www.bluecieloecm.com>



### CadWorks Software Oy Ltd

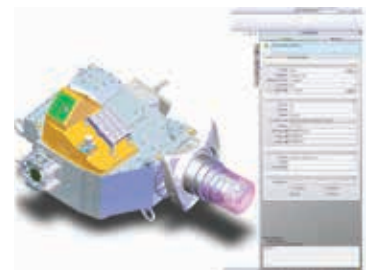
#### CustomWorks®

Helsingintie 44  
FIN-04430 Jarvenpaa  
Finland

+358 10 8357 311

[info@cadworkssoftware.com](mailto:info@cadworkssoftware.com)

<http://www.cadworkssoftware.com>



## CERTIFIED GOLD PARTNERS – PDM



### **MechWorks srl**

#### **DBWorks**

via Vallescura 8/2  
40136 – Bologna  
Italy

395 158 2294

[info@mechworks.com](mailto:info@mechworks.com)  
<http://www.mechworks.com>



### **Modultek Oy**

#### **SolidPDM**

Modultek Oy  
Itsenäisyydenkatu 41 A  
Pori, 28100  
Finland

+358 201 6100

[modultek@modultek.com](mailto:modultek@modultek.com)  
<http://www.modultek.com/en/main>



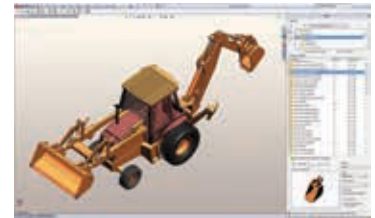
### **Synergis Technologies LLC**

#### **Adept PDM for SOLIDWORKS**

18 S. Fifth Street  
Quakertown, PA 18951

1 800 836 5440

[adept@synergissoftware.com](mailto:adept@synergissoftware.com)  
<http://www.synergissoftware.com>



## CERTIFIED GOLD PARTNERS – PIPING AND HVAC



### CAD PARTNER

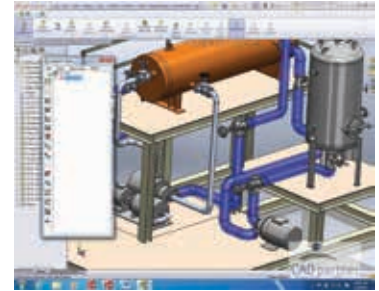
#### Smap3D Plant Design

18246 West Golden Lane  
Waddell, AZ 85355  
United States

+1 408 600 0574

[info@Smap3D.com](mailto:info@Smap3D.com)

<http://www.smap3d.com/Piping/en/concept.html>



## CERTIFIED GOLD PARTNERS – PLM



### HCV Data Management GmbH

#### Porta-X

Am Eichelgarten 1  
Walluf, Hessen 65396  
Germany

+49 (0) 6123 / 99 50 310

[info@hcv.de](mailto:info@hcv.de)

<http://www.hcv.de>



### keytech Software GmbH

#### keytech

Suderwichstrasse 68  
45665 Recklinghausen  
Germany

Europe: +49 2361 9 85 80 0

USA: 978 270 1516

[info@keytechplm.com](mailto:info@keytechplm.com)

<http://www.keytechplm.com>



## CERTIFIED GOLD PARTNERS – PLM INTEGRATION



**CIDEON Software GmbH & Co KG**  
**SAP PLM Integration for SOLIDWORKS**

Peterstraße 1  
Görlitz, Sachsen 02826  
Germany

+49 (0)3581 3878 0

[info@cideon-software.com](mailto:info@cideon-software.com)  
<http://www.cideon-software.com>



**xPLM Solution GmbH**  
**SOLIDWORKS Enterprise PDM Integration for ERP\***

Altmarkt-Galerie Dresden  
Altmarkt 25  
Dresden, Saxony 01067  
Germany

+49 351 82658 0

[xplm@xplm.com](mailto:xplm@xplm.com)  
<http://www.xplm.com>



\*Certified Gold for SOLIDWORKS Enterprise PDM

## CERTIFIED GOLD PARTNERS – REVERSE ENGINEERING AND INSPECTION



### **Albitech Ltd**

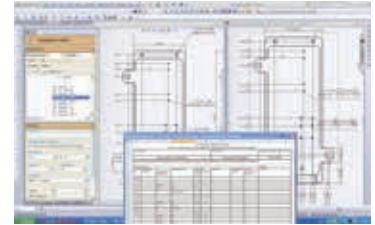
#### **Inspection Geni**

winberg 13  
cfar saba, 46385  
Israel

+97 2547 717 258

[dsashkis@albitech.org](mailto:dsashkis@albitech.org)

<http://www.inspectiongeni.com>



### **Creative DeZign Concepts, Inc.**

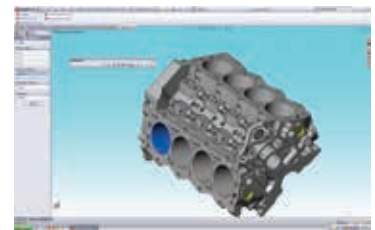
#### **DeZignWorks**

116 Morlake Drive  
Suite 104  
Mooresville, NC 28117

704 660 5100

[info@dezignworks.net](mailto:info@dezignworks.net)

<http://www.dezignworks.net>



### **ReverseEngineering.com**

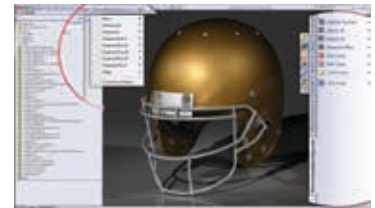
#### **HighRes Basic, Advanced and Industrial for SOLIDWORKS**

PO Box 2746  
La Jolla, CA 92038

858 488 5231

[sales@reverseengineering.com](mailto:sales@reverseengineering.com)

<http://www.reverseengineering.com>



### **Revware, Inc.**

#### **RevWorks®**

1645 Old Louisburg Road  
Raleigh, NC 27610

919 790 0000

[tomwelsh@revware.net](mailto:tomwelsh@revware.net)

<http://www.revware.net>



## CERTIFIED GOLD PARTNERS – SHEET-METAL FABRICATION

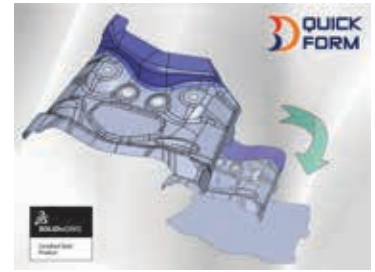


### **3D QuickTools Limited** **3DQuickForm**

Unit 1711, Grand City Plaza  
No. 1-17 Sai Lau Kok Road  
Tsuen Wan, N.T.  
Hong Kong

+852 2788 2832

[info@3dquickpress.com](mailto:info@3dquickpress.com)  
<http://www.3dquicktools.com>



### **DPS Software GmbH (formerly ToPsWorks)**

#### **ToPsWorks: Efficiency Tool for the Entire Process Chain of Sheet Metal**

Esslinger Straße 7  
Leinfelden-Echterdingen,  
Baden-Württemberg 70771  
Germany

+49 711 797310 59

[sales@topsworks.de](mailto:sales@topsworks.de)  
<http://www.topsworks.com>



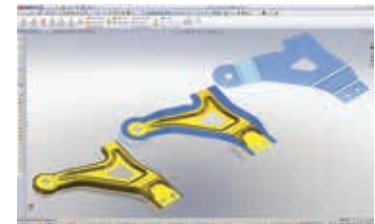
### **Forming Technologies, Inc.**

#### **BLANKWORKS**

Forming Technologies Inc.  
3370 South Service Road  
Burlington, Ontario L7N 3M6  
Canada

905 340 3370

[sales@forming.com](mailto:sales@forming.com)  
<http://www.forming.com>



### **Logopress**

#### **Logopress3F**

ZA Les Salines,  
Pouilley Les Vignes, 25115  
France

+33 381 60 23 60

[info@logopress3.com](mailto:info@logopress3.com)  
<http://www.logopress3.com>



## CERTIFIED GOLD PARTNERS – SHEET-METAL FABRICATION



### **SigmaTEK Systems, LLC**

#### **SolidNEST®**

1445 Kemper Meadow Drive  
Cincinnati, OH 45240

513 674 0005

[sales@sigmanest.com](mailto:sales@sigmanest.com)

<http://www.sigmanest.com>



### **SPI GmbH**

#### **SheetMetalWorks**

Kurt-Fischer-Straße 30a  
22926 Ahrensburg  
Germany

+49 4102 7060

[ms@spi.de](mailto:ms@spi.de)

<http://www.spi.de/en/sheet-metal-unfolding>



## CERTIFIED GOLD PARTNERS – STEEL DESIGN



### **Quadro Design Pty. Ltd.**

#### **The Steel Detailer**

Quadro Design Pty. Ltd.  
Unit 3, 2-10 Kewdale Rd  
Welshpool, WA 6106  
Australia

+61 083584200

[michael.crawford@quadro-design.com](mailto:michael.crawford@quadro-design.com)

<http://www.quadro-design.com.au/>



## CERTIFIED GOLD PARTNERS – TOLERANCE ANALYSIS



### **Sigmatrrix, LLC**

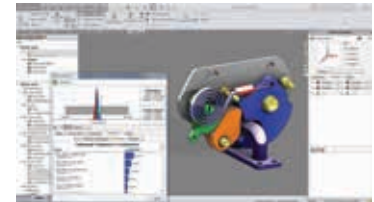
#### **CETOL 6 Sigma for SOLIDWORKS**

2240 Bush Drive  
Suite 200  
McKinney, TX 75070

1 972 542 7517

[sales@sigmetrix.com](mailto:sales@sigmetrix.com)

<http://www.sigmetrix.com>



### **Varatech Inc.**

#### **SigmundWorks**

1141 Ambertrace Unit 8  
Holland, MI 49423

616 393 6408

[sigmundsolutions@varatech.com](mailto:sigmundsolutions@varatech.com)

<http://www.varatech.com>



## CERTIFIED CAM PARTNERS – CAM



### 3D Systems

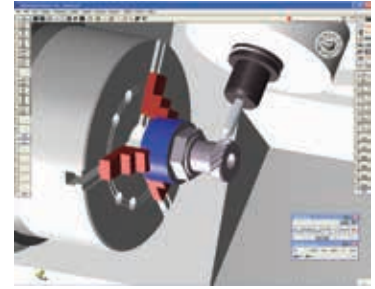
#### GibbsCAM®

323 Science Drive  
Moorpark, CA 93021

805 523 0004

[sales@gibbscam.com](mailto:sales@gibbscam.com)

<http://www.gibbscam.com>



### CNC Software, Inc.

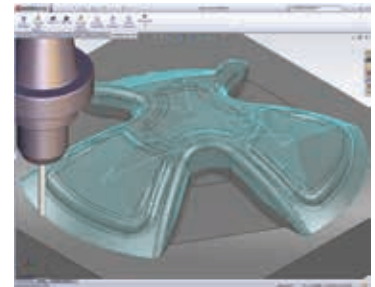
#### Mastercam

671 Old Post Road  
Tolland, CT 06084

860 875 5006

[mcinfo@mastercam.com](mailto:mcinfo@mastercam.com)

<http://www.mastercam.com>



### DP Technology Corp.

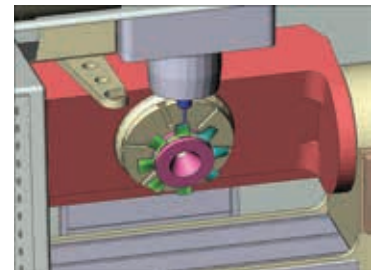
#### ESPRIT

1150 Avenida Acaso  
Camarillo, CA 93012

805 388 6000

[esprit@dptechnology.com](mailto:esprit@dptechnology.com)

<http://www.dptechnology.com>



## CERTIFIED CAM PARTNERS – CAM



**Edgcam – Part of the  
Vero Software Group**

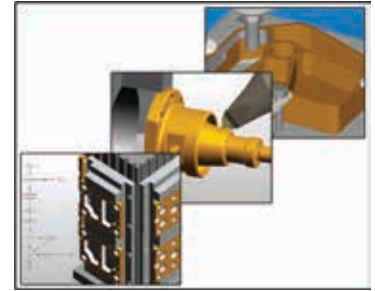
**Edgcam Solid Machinist**

Hadley House  
Bayshill Road  
Cheltenham, Gloucestershire GL50 3AW  
United Kingdom

+44 (0) 1242 542040

[info@vero.co.uk](mailto:info@vero.co.uk)

<http://www.vero-software.com>



**NCG CAM Solutions Ltd.**

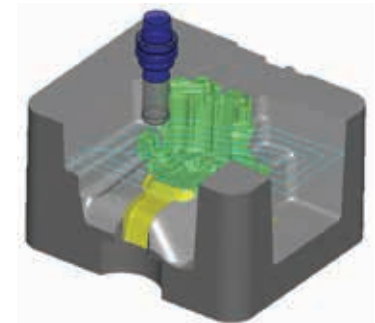
**NCG CAM**

Suite 5, Pioneer House North  
Chivers Way, Vision Park  
Histon, Cambridgeshire CB24 9NL

+44 (0) 1223 236408

[estelle@ncgcam.com](mailto:estelle@ncgcam.com)

<http://www.ncgcam.com>



**Surfcam, Inc. – Part of the  
Vero Software Group**

**SURFCAM®**

Hadley House  
Bayshill Road  
Cheltenham, Gloucestershire GL50 3AW

+44 (0) 1242 542040

[info@vero.co.uk](mailto:info@vero.co.uk)

<http://www.vero-software.com>



©2016 Dassault Systèmes. All rights reserved. 3DEXPERIENCE, the Compass icon and the 3DS logo, CATIA, SOLIDWORKS, ENOVIA, DELMIA, SIMULIA, GEOPAK, EXPLERD, 3DVIA, 3DSWMM, BIOVIA, NETVIBES, and 3DEXCITE are commercial trademarks or registered trademarks of Dassault Systèmes or its subsidiaries in the U.S. and/or other countries. All other trademarks are owned by their respective owners. Use of any Dassault Systèmes or its subsidiary trademarks is subject to their express written approval.

---

## Our 3DEXPERIENCE platform powers our brand applications, serving 12 industries, and provides a rich portfolio of industry solution experiences.

Dassault Systèmes, the 3DEXPERIENCE® Company, provides business and people with virtual universes to imagine sustainable innovations. Its world-leading solutions transform the way products are designed, produced, and supported. Dassault Systèmes' collaborative solutions foster social innovation, expanding possibilities for the virtual world to improve the real world. The group brings value to over 190,000 customers of all sizes in all industries in more than 140 countries. For more information, visit [www.3ds.com](http://www.3ds.com).



**3DEXPERIENCE®**

**Corporate Headquarters**

Dassault Systèmes  
10, rue Marcel Dassault  
CS 40501  
78946 Vélizy-Villacoublay Cedex  
France

**Americas**

Dassault Systèmes SolidWorks Corporation  
175 Wyman Street  
Waltham, MA 02451 USA  
Phone: 1 800 693 9000  
Outside the US: +1 781 810 5011  
Email: [generalinfo@solidworks.com](mailto:generalinfo@solidworks.com)

**Asia-Pacific**

Dassault Systèmes K.K.  
ThinkPark Tower  
2-1-1 Osaki, Shinagawa-ku,  
Tokyo 141-6020  
Japan